

## Analysis of Public Perception of Dynastic Politics in the 2024 Presidential and Vice Presidential Elections in Indonesia with a *Chi-Square Approach*

Nur Chamidah<sup>(1)</sup>, Firda Aulia Pratiwi<sup>(2)</sup>, Naura Qathrunnada Bi Arafah<sup>(3)</sup>,  
Bintang Alyaa Sabila<sup>(4)</sup>, Sheila Sevira Asteriska Naura<sup>(5)</sup>

<sup>1,2,3,4,5</sup>Departement of Mathematics, Faculty of Science and Technology, Universitas Airlangga

Jl. Dr. Ir. H. Soekarno, Mulyorejo, Surabaya, Jawa Timur

e-mail: [nur-c@fst.unair.ac.id](mailto:nur-c@fst.unair.ac.id)<sup>(1)</sup>, [firda.aulia.pratiwi-2021@fst.unair.ac.id](mailto:firda.aulia.pratiwi-2021@fst.unair.ac.id)<sup>(2)</sup>, [naura.qathrunnada.bi-2021@fst.unair.ac.id](mailto:naura.qathrunnada.bi-2021@fst.unair.ac.id)<sup>(3)</sup>, [bintang.alysaa.sabila-2021@fst.unair.ac.id](mailto:bintang.alysaa.sabila-2021@fst.unair.ac.id)<sup>(4)</sup>, [sheila.sevira.asteriska-2022@fst.unair.ac.id](mailto:sheila.sevira.asteriska-2022@fst.unair.ac.id)<sup>(5)</sup>

### ABSTRAK

Fenomena politik dinasti dalam Pemilihan Presiden dan Wakil Presiden 2024 menjadi isu hangat di Indonesia. Politik dinasti merupakan pewarisan kekuasaan dalam keluarga untuk mempertahankan pengaruh politik, yang berpotensi mengancam demokrasi dan pembangunan negara. Penelitian ini bertujuan mengidentifikasi hubungan antara persepsi masyarakat terhadap politik dinasti berdasarkan karakteristik responden, sejalan dengan SDGs poin ke-16 yaitu, perdamaian, keadilan, dan kelembagaan yang tangguh, jika politik dinasti tidak transparan maka dapat menghambat pemerintahan yang baik. Data diperoleh melalui kuesioner yang didistribusikan kepada 210 responden, kemudian dianalisis menggunakan uji *Chi-Square* untuk mengukur hubungan persepsi masyarakat terhadap politik dinasti dengan karakteristik jenis kelamin, profesi, dan wilayah kependudukan. Hasil analisis menunjukkan bahwa persepsi masyarakat tidak memiliki hubungan signifikan dengan jenis kelamin, namun signifikan terkait dengan profesi dan wilayah kependudukan pada salah satu pernyataan, yaitu setuju bahwa keberadaan dinasti politik berdampak negatif terhadap demokrasi Indonesia.

**Kata kunci:** Politik Dinasti; Politik Demokrasi; *Chi-square*

### ABSTRACT

*The phenomenon of dynastic politics in the 2024 Presidential and Vice Presidential Elections has become a hot issue in Indonesia. Dynastic politics is the inheritance of power in the family to maintain political influence, which has the potential to threaten democracy and state development. This study aims to identify the relationship between public perceptions of dynastic politics based on the characteristics of respondents, in line with SDGs point 16, namely, peace, justice and resilient institutions, if dynastic politics is not transparent it can hinder good governance. Data was obtained through questionnaires distributed to 210 respondents, then analyzed using the Chi-Square test to measure the relationship between public perceptions of dynastic politics and the characteristics of gender, profession, and region of residence. The results of the analysis show that public perception does not have a significant relationship with gender, but is significantly related to profession and region of residence on one of the statements, namely agreeing that the existence of political dynasties has a negative impact on Indonesian democracy.*

**Keywords:** *Dynasty Politics; Democratic Politics; Chi-Square.*

## INTRODUCTION

Indonesia is a developing country that adheres to a democratic system characterized by public participation through general elections to determine leaders and representatives of the people. Democracy, derived from the Greek *demos* (people) and *kratos* (power), means "government by the people" or "the people in power," namely government of the people, by the people, and for the people [1]. Indonesia as a developing country always faces challenges regarding political dynamics, including the issue of dynasty politics in the 2024 Presidential and Vice Presidential Elections. According to Dedi (2022), dynasty politics refers to formal political power that is inherited in families or relatives for more than one generation to maintain the dominance of power [2]. Dynasty politics is a double-edged phenomenon. On the one hand, this practice can violate the principles of democracy and human rights by depriving others of their rights. On the other hand, although it is considered normal if filled by competent individuals, dynasty politics is still prone to causing imbalances due to the mixture of family and community interests [3].

The issue of dynasty politics has drawn pros and cons because it is considered to be contrary to democracy in Indonesia and benefits certain families or groups in power [4]. Dynasty politics has been a topic of previous research, in studies "*Politik Dinasti di Indonesia: Tinjauan Kritis terhadap Penerapan Demokrasi di Era Kepemimpinan Presiden Jokowi*" by Syanur et al. (2022). This study states that dynasty politics are developing in Indonesia, especially in the Jokowi era, with members of the president's family involved in formal politics. This practice is considered to violate democratic ethics because it prioritizes family ties, which can hinder public participation and damage the democratic system [4]. Another study entitled "*Dampak Dinasti Politik terhadap Culture Demokrasi Pancasila di Indonesia*" by Gadafi and Nelwati (2022) discusses the impact of political dynasties on Pancasila democracy. This study shows that political dynasties bring positive and negative dynamics, with the risk of exacerbating inequality in the implementation of democracy in Indonesia [5]. Although the study relied on qualitative analysis to assess the impact of dynasty politics, this study will continue the previous study by using the chi-square method to test the relationship between public perceptions of dynasty politics based on demographic characteristics. The aim is to identify significant differences in perceptions of dynasty politics across different community groups.

The chi-square approach is one of the statistical methods that is often used in various disciplines. The chi-square test tests the match between the observed frequency and the expected frequency based on certain calculations [6]. This method has the ability to analyze data that is categorical or discrete [7]-[8]. Several studies related to the use of the chi-square method, namely by Kleden et.al, (2023) regarding the relationship between demographic factors and the incidence of malaria in East Wewewa sub-district [9], research by Widayanti & Kusumawati related to perceptions of vaccine effectiveness with attitudes of willingness to participate in COVID-19 vaccination [10]. Previous research that is relevant to discussing public perception of leadership using chi-square test analysis is research by Nurhalimah (2022) entitled "Public Perception of Female Village Head Leadership" using the Chi-square test to analyze public perception. The results showed no significant difference based on gender, but there was a significant difference based on age, indicating that perception of leadership is influenced by age [11]. Therefore, based

on the description above, the author is interested in conducting research on "Public Perception of Dynasty Politics in the 2024 Presidential and Vice President Elections in Indonesia using the Chi-Square approach". This is also in line with the Sustainable Development Goals (SDGs) point 16, namely peace, justice, and resilient development because the existence of non-transparent dynasty politics will be an obstacle for the government in Indonesia in implementing the SDGs [12].

**METHOD**

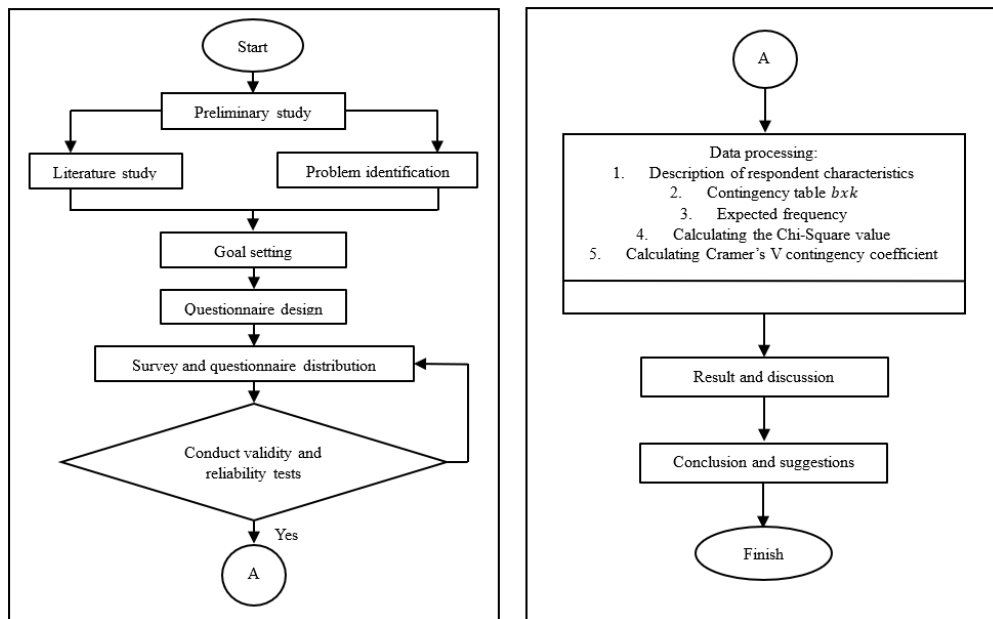
This research is a quantitative study that uses primary data obtained directly from 210 sample respondents with an Indonesian population and collected online through Google Form. The sampling method in this study uses purposive random sampling because the researcher sets criteria considerations for the research sample. This research was conducted over a period of one month from November 2 to November 30, 2023. The analysis technique used in this study is the Chi-Square Test. According to Nugraha (2013), For a two-way contingency table, the chi-square test statistic calculation formula is used as follows [13]:

$$\chi^2 = \sum_{i=1}^b \sum_{j=1}^k \frac{(n_{ij} - e_{ij})^2}{e_{ij}} \sim \chi^2(v) ; v = (b - 1)(k - 1) \tag{1}$$

with  $n_{ij}$  being the observation frequency in the  $i$ -th row and  $j$ -th column and  $e_{ij}$  being the expected frequency in the  $i$ -th row and  $j$ -th column. If there is a relationship between variables, the Cramer's V contingency coefficient test is conducted on a  $b \times k$  contingency table where  $b$  and  $k$  are greater than two and asymmetric ( $b \neq k$ ). According to Everitt (1993), the calculation statistics for the Cramér's V contingency coefficient test are as follows [14]:

$$V = \sqrt{\frac{\chi^2}{n \cdot \min(b-1, k-1)}} \tag{2}$$

The steps used to collect data to answer the research questions can be outlined through the following flow chart:



**Figure 1.** Research Flow Chart

Next is the most crucial stage in the research procedure, namely the data analysis process with the following steps:

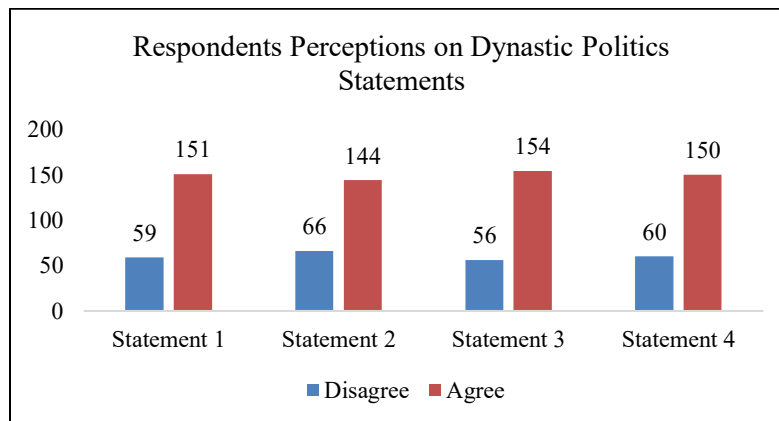
1. Conduct validity and reliability tests based on answers from respondents
2. Interpret descriptive statistics of the data obtained
3. Create a contingency table in the form of rows and columns for each of the community characteristic variables to be analyzed, namely gender, profession, and residency area and calculate the total number of row values and the total number
4. Calculating the expected frequency value of each cell using the expected frequency formula
5. Calculating the *Chi – Square* value
6. Comparing the calculated *Chi – Square* value with the *Chi – Square* table  $\chi^2_{\alpha(k-1)(s-1)}$
7. Making a decision with the criteria: Reject if the value  $\chi^2_{value} > \chi^2_{\alpha(k-1)(s-1)}$
8. Calculating the value of *Cramers’s V* contingency coefficient
9. Interpreting the research data

**RESULTS AND DISCUSSION**

Based on the research that has been done, the results of the research questionnaire contain four main statements that are indicators of public perception of dynastic politics, namely

1. I agree that dynastic politics has an effect on the election of the President and Vice President of Indonesia in 2024.
2. I agree that the existence of political dynasties has a negative impact on Indonesian democracy.
3. I agree that members of political dynasties get political positions because of family relationships, not because of their own abilities.
4. I agree that dynastic politics produces policies that do not benefit society, because it is only concerned with their own group.

Each component of the questionnaire statement consists of two answer choices with detailed scores: Disagree (1), agree (2).



**Figure 2.** Descriptive Statistics of the Number of Respondents for Each Statments

It can be seen from Figure 2. As many as 210 respondents who had filled out this research questionnaire, in statement 1 received a disagreeing answer by 59 (28%) respondents and agreed by 151 (72%) respondents. In statement 2 received a disagreeing answer by 66 (31.43%) respondents and agreed by 144 (68.57%) respondents. In statement 3 received a disapproving answer by 56 (27%) respondents and agreed by 154 (73%) respondents. In statement 4, they received a disapproving answer by 60 (28.57%) respondents and agreed by 150 (71.43%) respondents. It can be concluded overall that the dominant respondents answered in agreement to the statements given.

**1. Validity Test**

Validity test is a test used to determine and test the accuracy and determination of a measuring instrument. The hypotheses used are [15] :

$H_0 : \rho = 0$  (The measuring instruments/questions used in the questionnaire are invalid)

$H_1 : \rho \neq 0$  (The measuring instruments/questions used in the questionnaire are valid)

Test statistics are used with the rejection area if the  $H_0$  *p-value* is  $\leq \alpha$  (0.05).

**Table 1.** Validity Test on All Questions

Variable	<i>P-Value</i>	Decision	Conclusion
Statement 1	0.000	Reject $H_0$	Valid
Statement 2	0.000	Reject $H_0$	Valid
Statement 3	0.000	Reject $H_0$	Valid
Statement 4	0.000	Reject $H_0$	Valid

Based on the results of the validity test, the *p-value* for the four statements in the questionnaire is 0.000 so that it can be concluded that all category statement items on the questionnaire are valid. Therefore, such statements can be used in questionnaires.

**2. Reliability Test**

After performing the validity test, the next step before entering the test *Chi-square* is to conduct reliability tests. A variable is said to be good if it has a value *Cronbach's Alpha* > of 0.6 [16].

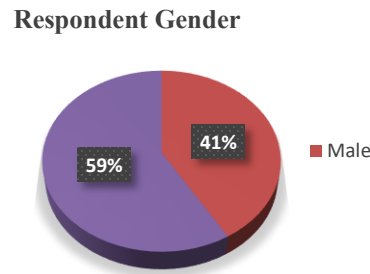
**Table 2.** Reliability Test

Category	Cronbach's Alpha value	Decision
Respondents' Perceptions of Dynastic Politics in the 2024 Presidential and Vice Presidential Elections in Indonesia	0.915	Reliable

Based on the results of the Reliability test, the reliability value of 0.915 which is classified as very high value so that it can be concluded that the questionnaire is considered capable of revealing information.

**3. Descriptive Statistics**

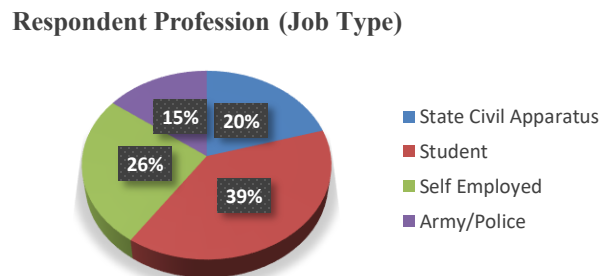
- a) Results of analysis of community characteristics based on gender



**Figure 3.** Percentage of Respondents by Gender

Based on Figure 1. From 210 respondents, it can be seen that the gender of people who have filled out questionnaires related to public perceptions of dynastic politics in the 2024 Presidential and Vice Presidential Elections in Indonesia is 41% or 87 male respondents and 59% or 123 respondents are female.

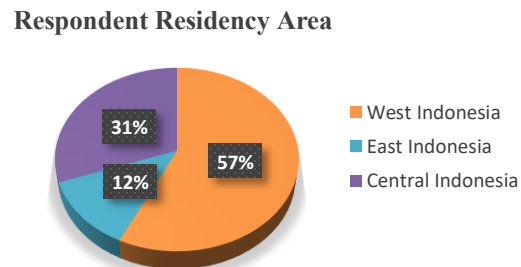
- b) Results of analysis of community characteristics based on profession (Job type)



**Figure 4.** Percentage of Respondents by Profession (Job Type)

Based on Figure 2. From 210 respondents, it can be seen that the type of community work that has filled out questionnaires related to public perception of dynastic politics in the 2024 Presidential and Vice Presidential Elections in Indonesia is 20% or 43 respondents of the State Civil Apparatus, of 39% or 82 respondents of Students / Students, of 26% or 54 respondents of Self-Employed, and of 15% or 31 respondents of Members of the TNI / Polri.

- c) Results of analysis of community characteristics based on residency area



**Figure 5.** Percentage of Respondents by Residency Area

Based on Figure 3. From 210 respondents, it can be seen that the population area of the people who have filled out questionnaires related to public perceptions of dynastic politics in the 2024 Presidential and Vice Presidential Elections in Indonesia is 57% or 120 respondents of western Indonesia, of 12% or 26 respondents of eastern Indonesia, of 31% or 64 respondents of central Indonesia.

**4. Chi-Square Independence Test**

This research uses the *Chi-Square* test to examine the relationship between public perceptions of dynastic politics in the 2024 elections and three demographic characteristics: gender, profession, and region of residence. The following are the results of the analysis for each statement based on the Chi-Square test:

a. The Independence Test was conducted on statement 1, which agreed that dynasty politics influenced the election of the President and Vice Presidential of Indonesia in 2024. The results showed that 75% of men and 70% of women agreed with this statement. Based on profession, students had the highest agreement rate of 75%, followed by TNI/Polri Members (74%), Civil Servants (70%), and Private Workers (67%). In addition, based on the area of residence, respondents from central Indonesia showed the highest agreement rate (80%), followed by western Indonesia (70%) and eastern Indonesia (65%). *Chi-Square* Test results are obtained from statements 1 to 3 characteristics in the following table 3.

**Table 3.** Chi-Square Test Result Statement 1

Characteristics	Chi-square Value	Chi-square Table	Decision
Gender	0.57969	3.84145	Accept $H_0$
Profession	3.06721	11.07049	Accept $H_0$
Residency Area	2.91138	5.99146	Accept $H_0$

Based on Table 3, the results of the Chi-Square test show that there is no significant relationship between statement 4 and gender, profession, or area of residence. The Chi-Square value for all characteristics is smaller than the table value, so the null hypothesis is accepted. This means that the agreed perception that dynastic politics influences the 2024 Indonesian Presidential and Vice Presidential elections is not influenced by these three demographic characteristics.

b. The Independence Test was conducted on statement 2, which agreed that the existence of political dynasties has a negative impact on Indonesian democracy. The results showed that 71% of men and 70% of women agreed with this statement. Based on profession, respondents from the Private Worker profession showed the highest level of agreement, which was 81%. This was followed by Students (69%), Civil Servants (58%) and TNI/Polri Members (58%). In addition, based on area of residence, respondents from western Indonesia had the highest level of agreement, which was 79%. Meanwhile, respondents from central and eastern Indonesia had lower levels of agreement, at 54% and 53% respectively. *Chi-Square* Test results are obtained from statements 2 to 3 characteristics in the following table.

**Table 4.** Chi-Square Test Result Statement 2

<b>Characteristics</b>	<b>Chi-square Test Result</b>	<b>Chi-square Table</b>	<b>Decision</b>	<b>Cramer's V</b>
Gender	0.49982	3.84145	Accept $H_0$	-
Profession	11.24943	11.07049	<b>Reject <math>H_0</math></b>	0.23145
Residency Area	14.59124	5.99146	<b>Reject <math>H_0</math></b>	0.26359

Based on Table 4, the follow-up test is because the results obtained are **Reject  $H_0$**  on the characteristics of the profession and residency area, where there is at least one unequal proportion. Chisquare's advanced Test results are shown in the following table 5 and table 6.

**Table 5.** Chi-Square Further Test Results Statement 2 on Profession

<b>Profession Characteristics</b>	<b>Chi-square Result Test</b>	<b>Chi-square Table</b>	<b>Decision</b>	<b>Cramer's V</b>
State Civil Apparatus – Student	1.61671	3.84145	Accept $H_0$	-
State Civil Apparatus – Self Employed	6.35186	3.84145	<b>Reject <math>H_0</math></b>	0.25589
State Civil Apparatus – Army/Police	4.1646E-05	3.84145	Accept $H_0$	-
Student – Self Employed	2.44055	3.84145	Accept $H_0$	-
Student – Army/Police	1.32082	3.84145	Accept $H_0$	-
Self Employed – Army/Police	5.47162	3.84145	<b>Reject <math>H_0</math></b>	0.253716

Based on Table 5, the results of the Chi-Square test show that there is no significant relationship between the profession of Civil Servants and students or TNI/Polri towards statement 2. However, there is a significant relationship between Private Workers and Civil Servants and TNI/Polri, although the relationship is weak (Cramer's V around 0.25). Although there is a relationship between the profession of Private Workers and other professions, the strength of the relationship is very small and not enough to influence the perception of dynasty politics.

**Table 6.** Chi-Square Further Test Results Statement 2 on Residency Area

<b>Residency Area Characteristics</b>	<b>Chi-square Test Result</b>	<b>Chi-square Table</b>	<b>Decision</b>	<b>Cramer's V</b>
West Indonesia – East	7.24142	3.84145	<b>Reject <math>H_0</math></b>	0.2227
West Indonesia – Central	12.0624	3.84145	<b>Reject <math>H_0</math></b>	0.25604
East Indonesia – Central	0.005276	3.84145	Accept $H_0$	-

Based on Table 6, the results of the Chi-Square test show that there is a significant relationship between West Indonesia and East Indonesia, and between West Indonesia and Central Indonesia towards statement 2, with Cramer's V values of 0.22 and 0.26 respectively, indicating a weak relationship. However, there is no significant relationship between East Indonesia and Central Indonesia, because the null hypothesis is accepted with a very small Chi-Square value.

c. The Independence Test was conducted on statement 3, which agreed that members of political dynasties obtain political positions because of family ties, not because of their own abilities. The results showed that the level of agreement of female respondents (74%) was slightly higher than that of males (72%). Based on profession, students had the highest level of agreement, which was 78%, followed by civil servants (76%) , TNI/Polri (74%), and Private Workers (63%). In addition, based on the area of residence, respondents from western Indonesia showed the highest level of agreement (77%), followed by central Indonesia (70%), and eastern Indonesia had the lowest level of agreement, which was 61%. *Chi-Square* Test results are obtained from statements 3 to 3 characteristics as follows.

**Table 7.** Chi-Square Test Result Statement 3

Characteristics	Chi-square Test Result	Chi-square Table	Decision
Gender	0.064225	3.84145	Accept H <sub>0</sub>
Profession	6.69805	11.07049	Accept H <sub>0</sub>
Residency Area	3.24931	5.99146	Accept H <sub>0</sub>

Based on Table 7, the results of the Chi-Square test show no significant relationship between statement 3 and gender, profession, or area of residence. The Chi-Square value for all characteristics is smaller than the table value, so the null hypothesis is accepted. This means that the agreed perception that members of political dynasties obtain political positions because of family ties, not because of their own abilities, is not influenced by the three demographic characteristics.

d. The Independence Test was conducted on statement 4, which agreed that dynasty politics resulted in policies that were not beneficial to the community, because they only prioritized their own group. The results showed that 75% of men and 70% of women agreed with this statement. Based on profession, respondents who worked as Private Workers had the highest level of agreement (76%), followed by Students (73%), TNI/Polri Members (68%), and Civil Servants (65%). Based on the area of residence, respondents from western Indonesia showed the highest level of agreement (75%), eastern Indonesia (70%), and central Indonesia (65%). *Chi-Square Test results are obtained* from statements 4 to 3 characteristics as follows.

**Table 8.** Chi-Square Test Result Statement 4

Characteristics	Chi-square Test Result	Chi-square Table	Decision
Gender	0.78497	3.84145	Accept H <sub>0</sub>
Profession	3.35444	11.07049	Accept H <sub>0</sub>
Residency Area	1.86777	5.99146	Accept H <sub>0</sub>

Based on Table 8, the results of the Chi-Square test show no significant relationship between statement 4 and gender, profession, or area of residence. The Chi-Square value for all characteristics is smaller than the table value, so the null hypothesis is accepted. This means that

the perception that dynastic politics produces policies that are not beneficial to the community is not influenced by the three demographic characteristics.

## CONCLUSION

Based on research conducted on 210 respondents with questionnaire filling media, it was concluded that people's perception of dynastic politics was not significantly related to gender. However, significant differences arise when involving certain professions (types of work) and population areas, especially in the second statement which agrees that the existence of dynastic politics has a negative impact on Indonesian democracy. These results provide a deeper picture of the complexity and dynamics of public perceptions of dynastic politics in Indonesia and strengthen understanding of how certain factors can influence their views. This research also has the potential to support the government's efforts in building public trust in political institutions in the electoral process.

## ACKNOWLEDGMENTS

The author would like to thank the Statistics Study Program, Faculty of Science and Technology and Universitas Airlangga, as well as all parties involved in supporting this research and publication.

## REFERENCE

- [1] A. S. Purba, "Potret Pandangan Akademisi di Jurnal Ilmu Sosial dan Ilmu Politik UGM (JSP) Mengenai Permasalahan Demokrasi di Indonesia," *Jurnal Politik Muda*, vol. 4, pp. 1–2, 2015.
- [2] A. Dedi, "Politik Dinasti dalam Prespektif Demokrasi," *Moderat: Jurnal Ilmiah Ilmu Pemerintahan*, pp. 92–101, 2022.
- [3] A. A. Rahma, A. A. Oktaviani, A. Hofifah, T. Z. Ahda, and R. G. Nugraha, "Pengaruh Dinasti Politik Terhadap Perkembangan Demokrasi Pancasila di Indonesia," *Jurnal Kewarganegaraan*, vol. 6, 2022.
- [4] A. D. M. Syanur, I. B. S. AW, and L. Afrilia, "Politik Dinasti Di Indonesia: Tinjauan Kritis Terhadap Penerapan Demokrasi Di Era Kepemimpinan Presiden Jokowi," *Kultura: Jurnal Ilmu Hukum, Sosial, Dan Humaniora*, vol. 1, no. 3, pp. 17–26, 2023.
- [5] K. Gadafi and S. Nelwati, "Dampak Dinasti Politik Terhadap Culture Demokrasi Pancasila di Indonesia," *Journal Innovation In Education*, vol. 2, no. 3, pp. 133–148, 2022.
- [6] W. Pramesti, "Tabel Kontingensi Untuk Mengetahui Hubungan Antara Jenis Penyakit, Jenis Kelamin, Usia, Lama Rawat dan Keadaan Keluar Pasien," *J Statistika: Jurnal Ilmiah Teori dan Aplikasi Statistika*, pp. 4–1, 2012, doi: 10.36456/jstat.vol4.no1.a1165.
- [7] X. Ji, W. Gu, X. Qian, H. Wei, and C. Zhang, "Combined Neyman–Pearson chi-square: An improved approximation to the Poisson-likelihood chi-square," *Nucl Instrum Methods Phys Res A*, vol. 961, 2020, doi: 10.1016/j.nima.2020.163677.
- [8] S. D. Bolboacă, L. Jäntschi, A. F. Sestraş, R. E. Sestraş, and D. C. Pamfil, "Pearson-fisher chi-square statistic revisited," *Information (Switzerland)*, vol. 2, no. 3, pp. 528–545, 2011, doi: 10.3390/info2030528.

- [9] M. A. Kleden, J. U. Moto, and R. D. Guntur, "Hubungan Faktor Demografis dengan Kejadian Malaria di Kecamatan Wewewa Timur: Pendekatan Analisis Chi-Square," *J Statistika: Jurnal Ilmiah Teori dan Aplikasi Statistika*, vol. 16, no. 2, pp. 499–513, 2023.
- [10] L. P. Widayanti and E. Kusumawati, "Hubungan persepsi tentang efektifitas vaksin dengan sikap kesediaan mengikuti vaksinasi Covid-19," *Jurnal Hearty: Jurnal Kesehatan Masyarakat*, vol. 9, no. 2, pp. 78–85, 2021.
- [11] S. Nurhalimah, "Persepsi Masyarakat terhadap Kepemimpinan Perempuan Kepala Desa (Studi di Desa Ciasihan Kecamatan Pamijahan Kabupaten Bogor)," 2022.
- [12] United Nations, "Sustainable Development Goal 16: Peace, Justice, and Strong Institutions." Accessed: Dec. 14, 2024. [Online]. Available: <https://indonesia.un.org/id/sdgs/16/progress>
- [13] J. Nugraha, *Pengantar Analisis Data Kategorik: Metode dan Aplikasi menggunakan Program R*. Yogyakarta: Group Penerbitan CV BUDI UTAMA, 2013.
- [14] B. S. Everitt and Edward Arnold, *The Analysis of Contingency Tables (2nd Edition)*. London: Edward Arnold, 1993.
- [15] I. Sugiyono, *Metode Penelitian Kuantitatif, Kualitatif, dan R&D*. Bandung: CV. Alfabeta, 2019.
- [16] H. Retnawati, "Reliabilitas Instrumen Penelitian," *Jurnal Pendidikan Teknik Mesin Unnes*, vol. 12, no. 1, 2017.